

# Canadian Livestock Feed Consumption – 2022 Overview

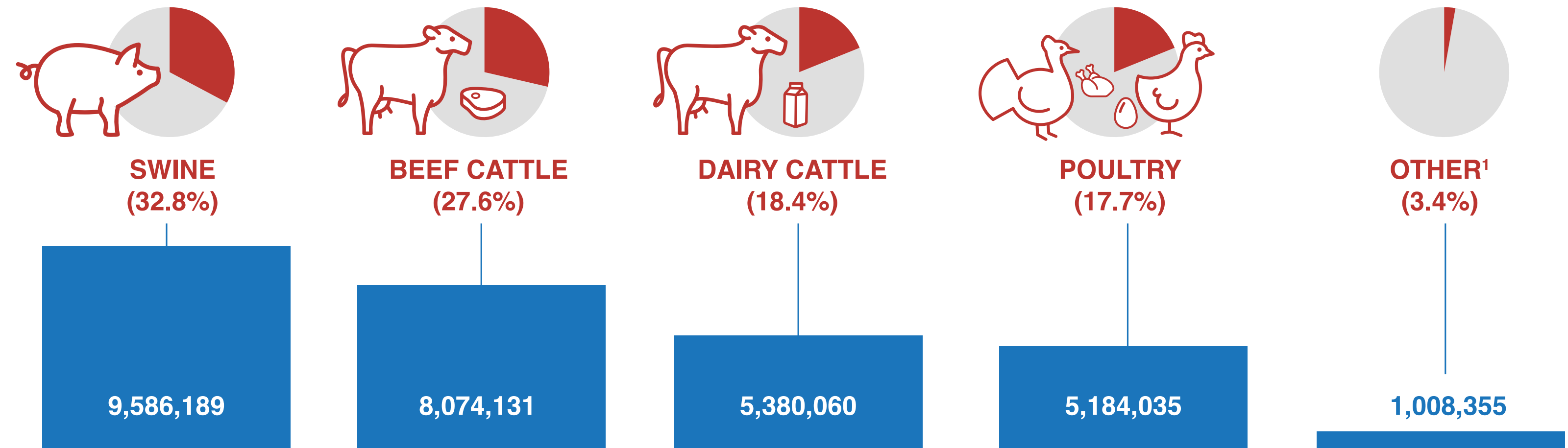
The livestock feed industry is an essential part of Canada's agri-food economy. As an integral part of the food value chain, the sector intersects with a wide range of stakeholders from grain growers to producers of meat, milk, and eggs. In 2022, international exports of livestock feed and feed ingredients generated approximately 3.33 billion dollars in revenue.

Through this resource, ANAC aims to provide an annual estimate of livestock feed consumption volumes in Canada, broken down by species and geography. This data will help stakeholders understand livestock feed demand in Canada and will aid in tracking changes in the Canadian feed industry.

In 2022, approximately 29.2 million tonnes of feed was consumed by livestock (not including forages).

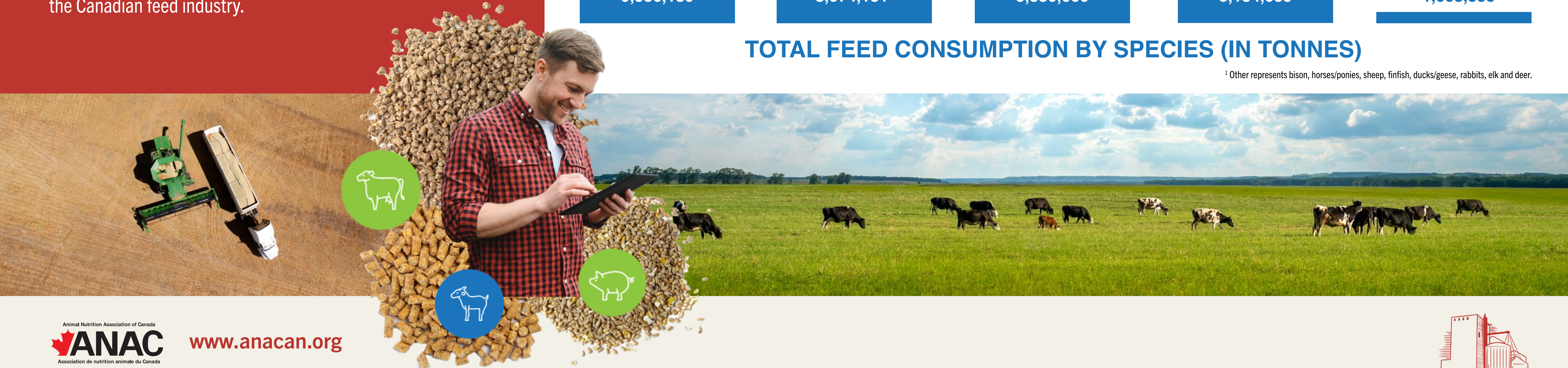
## Numbers at a glance

It is estimated that 96.6% of total feed is consumed by swine, beef cattle, dairy cattle and poultry.



## TOTAL FEED CONSUMPTION BY SPECIES (IN TONNES)

<sup>1</sup> Other represents bison, horses/ponies, sheep, finfish, ducks/geese, rabbits, elk and deer.





# Canadian feed consumption estimates by species<sup>2</sup> (million tonnes)

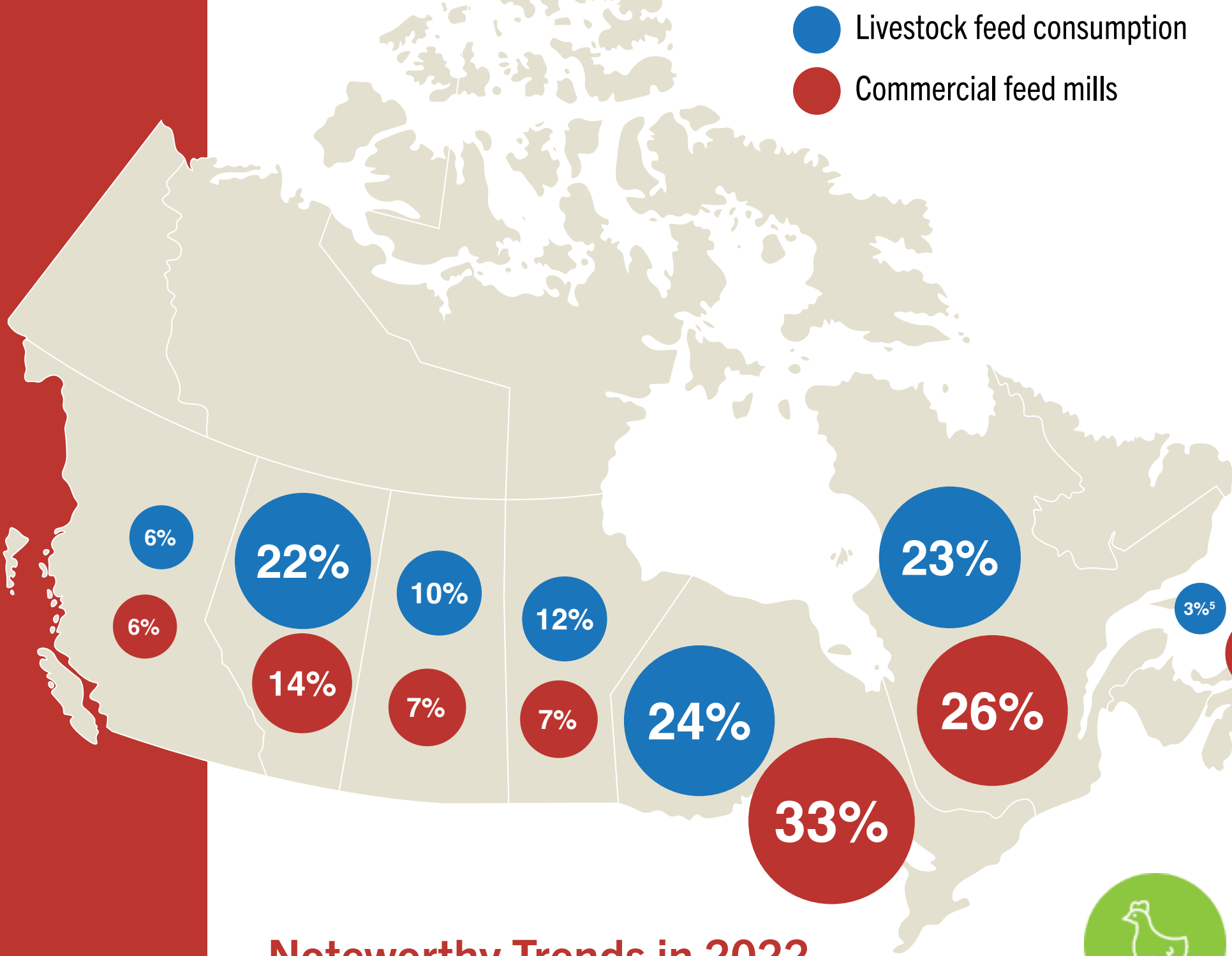
## Monogastric

Swine	9.59
Broilers	3.37
Layers	1.41
Turkeys	0.40
Horses/Ponies <sup>3</sup>	0.25
Finfish	0.16
Ducks/Geese	0.04
Rabbits <sup>4</sup>	0.01
Total monogastric	15.22

## Ruminant

Beef cattle	8.07
Dairy cattle	5.38
Bison <sup>4</sup>	0.33
Sheep	0.23
Deer and Elk <sup>4</sup>	0.01
Total ruminant	14.02

## Distribution of livestock feed consumption and commercial feed mills across Canada



For the complete report from ANAC, including data and sources, please reference:

*Canadian Livestock Feed Consumption – 2022 Estimates*



## Methodology and assumptions

Feed consumption estimates are provided as complete feed equivalents on an as fed basis (and do not include forages).

Calculation of feed consumption for species:  
**average feed intake x population = estimated feed consumption**

## Noteworthy Trends in 2022

- Overall national feed consumption increased by 1.0% from 2021.
- Estimated national duck and goose feed consumption dropped 30% from 2021 to 2022 due to the significant decline in duck populations resulting from Highly Pathogenic Avian Influenza outbreaks.
- Alberta’s estimated beef feed consumption increased 14.6% from 2021 to 2022, contributing to Canada’s estimated 4.4% increase in beef feed consumption nationwide.



<sup>2</sup> Goats are a minor species, but data was insufficient to estimate their feed consumption.

<sup>3</sup> Reflects population data from 2010.

<sup>4</sup> Reflects population data from 2021

<sup>5</sup> Atlantic Canada includes the provinces of Nova Scotia, New Brunswick, Prince Edward Island, and Newfoundland and Labrador.

